

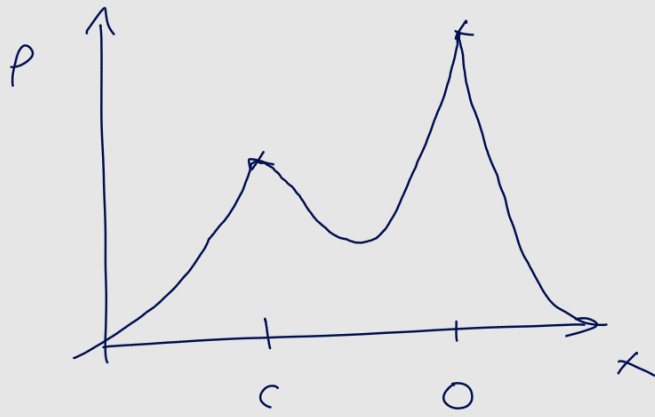
$$\vec{r} = a_1 \hat{e}_1 + a_2 \hat{e}_2$$

$$\begin{matrix} \underline{\quad} & \underline{\quad} \\ (1) & (0) \\ (0) & (1) \end{matrix}$$

$$= a'_1 \vec{a} + a'_2 \vec{b}$$

↙ Basisvektoren





$$p(x, y, z) = p(\vec{x})$$